



Locknet

LOCK NET
CONTROL AND ALARM SYSTEM

www.locknet-control.com



CONTROL AND ALARM SYSTEM

Most of equipment, machinery, property and appliances in the organization tend to lack of proper maintaining when we want to use them. Sometimes, those devices are not in a state of being unusable immediately, thus loose the opportunity to use them for the certain activity. Equipment maintenance still requires human to handle it.

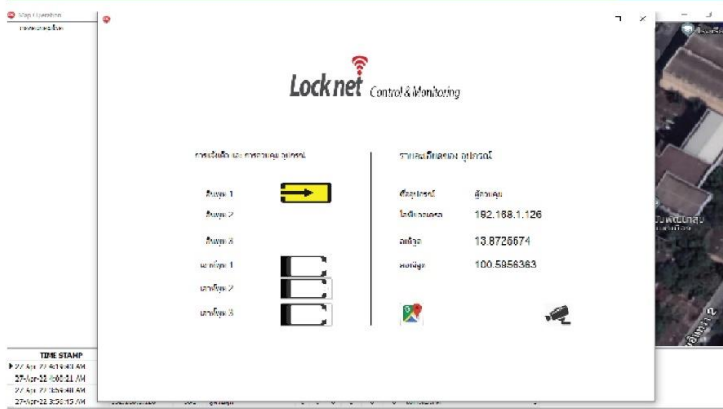
Therefore, implementing a control and alarm system via a network to help maintain the system is essential. It reduces the number of manpower, the time to recognize problems with devices and also helps to monitor and support existing appliances to work more efficiently. Moreover we can access the devices quickly, know what is going on with the connected device, control and alert immediately.

SYSTEM DIAGRAM

Operation Screen



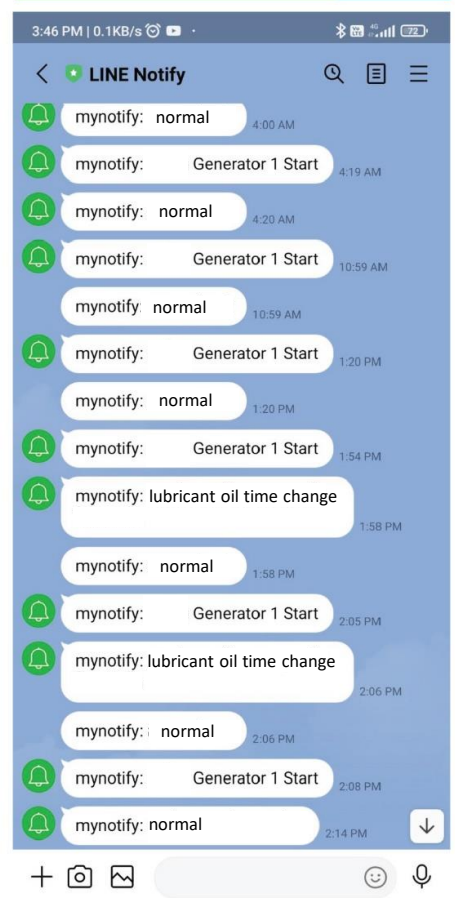
Operation Screen on alarm



Show Location in google map



Alarm to line notify



SPECIFICATION



Specification	
Power Supply	12VDC 2A
Network	RJ-45 Ethernet 10/100 Mbps.
Input	3 Port (Dry Contact)
Output	3 Port (Dry Contact) support 24VDC 5A
Sensor	Temperature -10 to 120 °C Open and check status of 3 wire cooling fan on Output 3 (option)
Other	Din rail support
Din rail support	145mm x 40mm x 90mm

CONTROL AND ALARM SYSTEM VIA A NETWORK

- » A system for sending and receiving data through the network via an Ethernet channel RJ-45
- » Support 3 channels of closed circuit Dry Contact input and 3 channels of Dry Contact output.
- » Able to set conditions of input signal such as the output of other alarm devices and notify via E-mail, Line, which can set the message to be sent in each condition
- » Able to set cumulative hours of each input for notification e.g. alarm for maintenance of equipment connected to the input of the control and alarm device.
- » Able to set the time to receive the continuous value of each Input to alert the device that is connected to the Input of the control and alarm device, such as alerting when the door is opened or the cabinet is opened beyond the specified time
- » Able to alert in case of power failure by connecting to the input signal of the device.
- » Able to command Output to work according to input conditions.
- » Output can be commanded to operate from software controlled by the operator, such as opening the door, turning on the light, turning on the siren, and opening the cabinet by the device must be connected to the output of the control and alarm device.
- » Able to receive temperature value from temperature sensor and alert when temperature exceeds set value and can also set the temperature range to turn on/off the output channel. For example, when the temperature reaches a certain point, the signal channel will be on and off when the temperature drops to a set point.
- » Output can be connected to a rated fan to monitor fan rotation.
- » Can view images from CCTV IP Camera via RTSP protocol
- » Can simulate the location and status of the control and alarm device on Map Image and show the actual location in Google Map. Show the color of the notification.
- » Log input of the control and alarms devices can be saved in the database to display as a report.
- » Input data from the control device can be reported as a summary report of daily or specific period of time.
- » Able to select the desired input data to report, displaying in graph format which can be selected as bar, line, and pie graph

Contact us

TRADE AND TECH CORPORATION LTD.

221 Kanchanapisek road ,Lak Song, Bang Khae, Bangkok 10160

Tel.+66 (0) 2 8035098 ,+66 (0) 877172180

www.tradeandtech.co.th

